



Hopewell Federal Credit Union
Beth Kelly, Marketing and Business Development Director
bkelly@hopewellfcu.org
501 Hopewell Drive, Heath, Ohio 43056
Phone: (740) 522-8311

FOR IMMEDIATE RELEASE

PREPARATIONS FOR THE ANNUAL HOPEWELL FEDERAL CAR SHOW UNDERWAY
Proceeds to Be Donated to Licking County Humane Society

NEWARK, OH – July 25, 2022—Hopewell Federal Credit Union is working on preparations for its annual Car Show in Newark, Ohio. The **Hopewell Federal Credit Union Car Show** will be held August 6th, 2022 from 10am-2pm at their Newark branch located at 1690 North 21st Street. All proceeds for this event will benefit the **Licking County Humane Society (LCHS)**, a non-profit volunteer organization devoted to the humane treatment of animals. LCHS operates a non-profit, no-kill shelter in Heath, Ohio.

The event invites participants to register any make, model and year vehicle for only \$10 from 10:00AM to 1:00PM on the day of the event. The awards will take place at 1:45PM and registrants must be present to win. A collection of awards will be presented including dash plaques, CEO award, Jim Matheny Memorial award, and TOP 18 awards. Anyone interesting in supporting their effort with donations of funds, door prizes or goodie bag inserts should contact, Beth Kelly at 740.522.8311 or visit www.hopewellfcu.org for sponsorship details.

Attendees of the event will enjoy free admission, DJ music, 50/50 raffle and door prize drawings. Food will be available to purchase from Moe's Original Bar B Que food truck during the event. Hopewell Federal Credit Union encourages the public to attend this event to support this worthy cause.

About Hopewell Federal Credit Union (HFCU):

Hopewell Federal Credit Union, one of the leading credit unions serving Licking, Franklin and Delaware Counties, is a not-for-profit financial cooperative that is owned by its members. They provide a full range of financial services including savings and checking accounts, loan products and business accounts. HFCU operates with the mission of helping its members get ahead financially and serves anyone who lives, works or worships in Licking, Franklin and Delaware Counties.

###

If you would like more information about this topic, or to schedule any interviews, please contact Beth Kelly at (740) 522-8311 or email bkelly@hopewellfcu.org



**HOPEWELL
FEDERAL**
CREDIT UNION



ANNUAL CAR SHOW

AUGUST 6th
10AM THRU 2PM
at 1690 N. 21st St., Newark

Register any year, make or
model for only \$10

Car Registration from 10am-1pm

Awards 1:45pm | Must be Present to Win

Dash Plaques, Top 18,
Jim Matheny Memorial Award
and CEO Awards

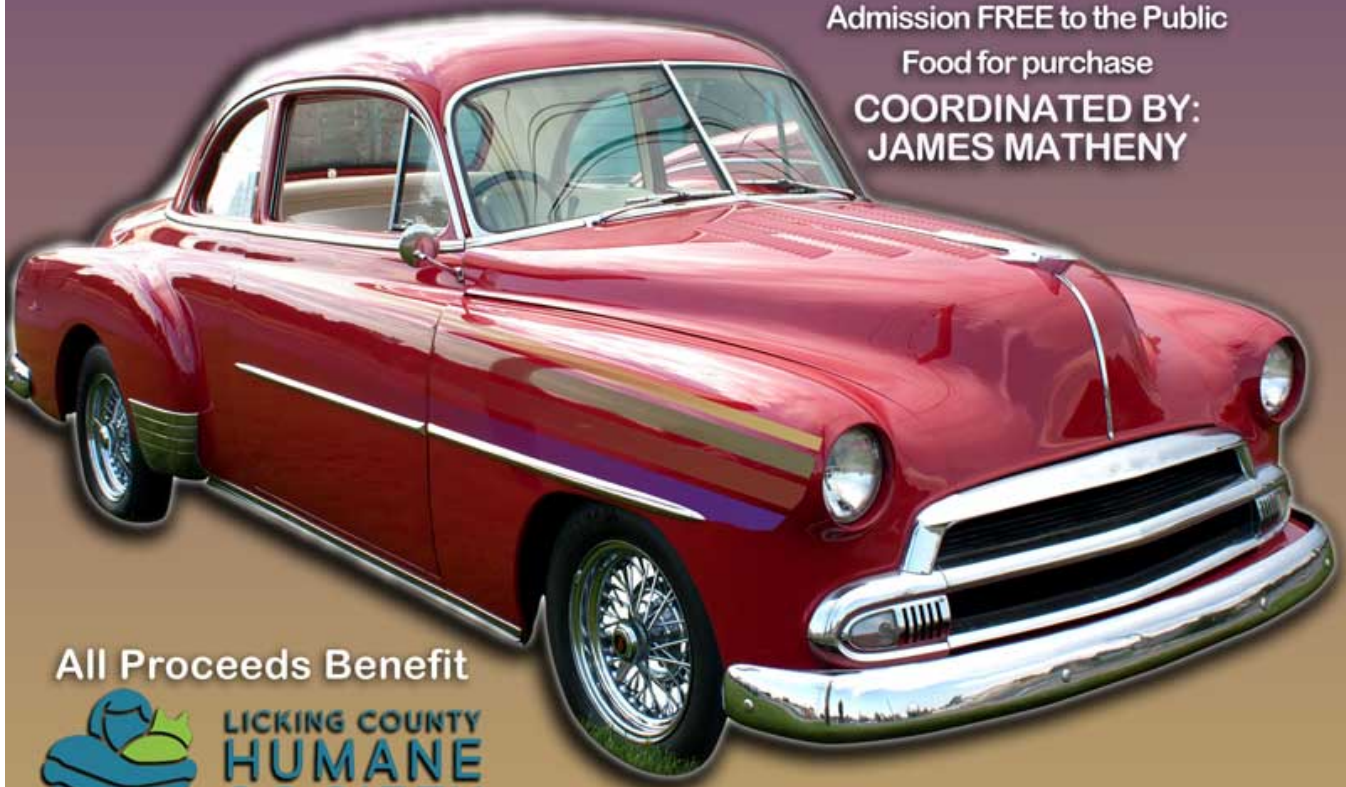
All Years Welcome

DJ Music, 50/50 Raffle,
and Door Prizes

Admission FREE to the Public

Food for purchase

COORDINATED BY:
JAMES MATHENY



All Proceeds Benefit



**LICKING COUNTY
HUMANE
SOCIETY**

WWW.HOPEWELLFCU.ORG * 740.522.8311